



Music and Lyrics by **STEPHEN SCHWARTZ**

Book by **ROGER O. HIRSON**

Directed by **JOANNA MAY CULLINAN**

Music Direction by **BRADLEY WYNER**

Choreography by **KENYA R. WOODS**

Roe Green Theatre at Maltz Performing Arts Center

April 10, 11, 17, 18 at 7:30 p.m.

April 12, 19 at 3 p.m.



**CASE WESTERN RESERVE
UNIVERSITY**
College of Arts and Sciences

Theater

The Case Western Reserve University
Department of Theater Presents

PIPPIN

Music and Lyrics by: Steven Schwartz

Book by: Roger O. Hirson

Directed by: Joanna May Cullinan

Music Direction by: Bradley Wyner

Choreography: Kenya R. Woods

Assistant Director	Ava Tallarida
Assistant Music Director	Alexander Gill
Scenic Design	Anna Bauer
Costume Design	Angelina Herin
Assistant Costume Design	Ava Bee
Lighting Design	Jaemin Park
Assistant Lighting Design	Griffin Rabins
Sound Design	Nick Drashner
Assistant Sound Design	Alexander Olsen
Intimacy Coordinator	Eliza Ladd Schwarz

SETTING

The Holy Roman Empire and Thereabouts

TIME

780 A.D. and Thereabouts

CAST

LEADING PLAYER.....	Carrena Spann
PIPPIN.....	Easton Sumlin
CHARLES, <i>his father</i>	Dominic Monczewski
LEWIS, <i>his half-brother</i>	Raaghuv Vazirani
FASTRADA, <i>Lewis' mother</i>	Margot McCann*
BERTHE, <i>Pippin's grandmother</i>	Mary Coulter
CATHERINE, <i>a widow</i>	Kashmere Shafik
THEO, <i>her son</i>	Dean Hollis
PLAYER.....	Keira Celebuski
PLAYER.....	Natalie Conwell
PLAYER.....	Jack Exline
PLAYER.....	Colette Hartman*
PLAYER.....	Ian Jacobs
PLAYER.....	Sydney Raby
PLAYER.....	Franco Fernandez
PLAYER.....	AJ Williams

*Dance Captains

ORCHESTRA

Keyboard 1/Conductor.....	Bradley Wyner
Keyboard 2.....	Alexander Gill
Guitars.....	Jesse Hodgson
Bass.....	Tim Keo
Drums.....	Jaiden Willis
Percussion.....	Justin Hart
Trumpet.....	Matt Wirfel
Trombone.....	Aaron Phillips
Clarinet/Bass Clarinet/Flute.....	Lukas Helwig
Flute/Clarinet.....	Christa Cruder
Oboe/English Horn.....	Gabrielle Olivares
Violin.....	Avery Stager
Violin/Viola.....	Oscar Heft

PRODUCTION CREW

Stage Manager.....	Marcus Black
Assistant Stage Manager.....	Samantha Mailer
Props Master.....	Parker Crigger
Wig Design.....	Wigs N' Whiskers
Makeup Design.....	Ava Bee
Light Board Op.....	Daniel Patton
Sound Op A1.....	Alexander Olsen
Sound Op A2.....	Benjamin Creiner
Wardrobe #1.....	Lorelei Fontaine
Wardrobe #2.....	Sophie Bruch
Backstage Crew #1.....	Annalise Osei-Owusu
Backstage Crew #2.....	Yuqi Wang
Backstage Crew #3.....	Katie Frick
Spot Operator #1.....	Es Pikus
Spot Operator #2.....	Amanda Hsu
Scene Shop Technicians.....	Justine Moore, Sean Cross Ella Merrill, Jonah Halloran, Amanda Hsu, John Shillingsburg Es Pikus, Mia Perez, Owen Wallace, Nicky Zhai Ella Ungaretti-Levy, Daniel Patton, Jannah Bosch
Costume Shop Assistants.....	Dominic Monczewski, Elizabeth Odife, Jessica Pan, Sophie Bruch, Karma Hairston, Peggy Lin, Mary Coulter, Lorelei Fontaine, Sydney Raby, Ava Bee
Scenic Art.....	Students enrolled in THTR 260, 105, and 185
Construction and Lighting Crew.....	Students enrolled in THTR 105, 185 and the CWRU/ Cleveland Play House Graduate Acting Ensemble
House Manager.....	Ashley Rosinski
Box Office Assistants.....	Alexander Jones, Es Pikus

DIRECTOR'S NOTE

TBD

- Joanna May Cullinan (Director)

DIRECTOR & CHOREOGRAPHER BIOS



Joanna May Cullinan (Director) is a freelance director throughout Northeast Ohio. She has been the artistic director of theater at Cain Park since 2017 where favorite directing credits include *Caroline, Or Change, Fun Home, School of Rock, Ragtime, Memphis*, and *Rock of Ages*. Recently, Joanna has directed at Playhouse Square, Ohio Shakespeare Festival, Blank Canvas Theatre, and Stocker

Arts Center. She is currently working on her MFA in Directing through the University of Idaho.

Bradley Wyner (Music Director) has enjoyed working with Case students for nearly 20 years. Music director at Cain Park (*Rent* and *School of Rock*), Blank Canvas (*Hedwig, Kiss of the Spiderwoman, One Man Two Guvnors*, many others), plus Near West, Cleveland Public Theater, Dobama, Kalliope Stage, Cleveland Play House. Proud of his many years as a teaching artist; students have gone on to careers as teachers, non-profit leaders, journalists, artists, musicians, and actors on stages from Broadway to Cleveland.



Kenya R. Woods (Choreographer) a Cleveland, Ohio native, has worked in both the dance and theatrical community for over 25 years. Her experience has led her to choreograph many productions at Case Western Reserve including *The Adams Family, High Fidelity, Blood At the Root, Everybody, The Liar* and *Cabaret*. She is excited to be working with Joanna May Cullinan and the dedicated

and talented performers and staff members on *Tartuffe* at the Cleveland Playhouse.

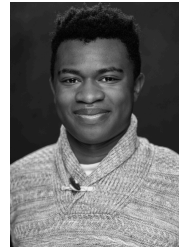
CAST BIOS



Carrena Spann (Leading Player) hails from Columbia, SC. A Theater major with a Studio Art minor, a Drama graduate of SCGSAH, and a Department Full Tuition and Dunn Scholarship recipient, Carrena is grateful to make her Roe Green debut alongside such an incredibly talented (and generous) cast, crew and creative team. Recent department credits include Annie in *Silent Sky*, Sound

Design for *John Proctor is the Villain*, Costume Design for PTG's *Mary Gets Hers*. She is deeply excited to embark on the MUNY 2026 Season Internship in Directing for their production of *South Pacific* this summer. She extends more special thanks to Joanna, Bradley and Kenya for the rambunctious joy and astounding precision with which they've led this process, Marcus, Sam and the design team for their immense brilliance behind the scenes, and the vital support of the Department faculty and her cherished friends on campus. She's grateful for the steadfastness of her loving family, and of Christ, who remind her that beyond the glittering lights of it all, the gift of serving others is what's truly extraordinary.

Easton Sumlin (Pippin) is so happy to have found his corner of the sky by being part of (and being) *Pippin!* Previously seen on the CWRU stage as Christopher Wren in *The Mousetrap*, as well as with Heights Youth Theatre, Cain Park, Dobama Theatre, Cleveland Public Theatre, and Ensemble Theatre. Easton is a third-year, majoring in English and Theatre and minoring in Marketing. When



he's not studying or asleep, you can find him playing video games, making original characters, or hanging out with his JapanCASE team. He would love to thank Johanna, Marcus, Brad, Kenya, Sam, Alex, all the cast and all the crew for helping bring this production to life and his mother, father, sister, and dog for supporting him and always pushing him to be the best he can be. Enjoy the magic!

CAST BIOS



Dominic Monczewski (Charles) is a Senior at CWRU studying Theater and Sociology. This will be his ninth and final production at CWRU, so he would like to thank the cast and crew for making this a memorable experience. Outside of the Department, you might recognize him as a member of IMPROVment, CWRU's Improv comedy troupe. He would like to thank you for your continuing

patronage and support of the theater. Lastly, he would like to thank his family for their endless support of his endeavors the past four years and hopes they enjoy him prancing on the stage one last time.

Raaghuv Vazirani (Lewis) is a 4th year Computer Science and Cognitive Science student. You may have recently seen him in *The Lifespan of a Fact* (John D'Agata), *The Importance of Being Earnest* (Dr. Chausable), or producing PTG Live. He's so grateful for life, Nuclear Semiotics, and the opportunity to perform. Outside of theater you can find him playing enclose.horse, snowboarding, or learning how to juggle. Instagram: @Raaghuv



Margot McCann (Fastrada) is a senior at CWRU and is both excited and saddened to be performing in her final show with the department! She has appeared in several previous productions including *Cymbeline*, *Electra*, *Cabaret* (Helga), *The Comedy of Errors* (Courtesan), and *The Importance of Being Earnest* (Cecily Cardew). She has also worked with Players' Theatre Group on shows like *Hamlet*

(Horatio) and *Melancholy Play* (Tilly), as well as events like Neofuturism, PTGLive!, and Play in a Day. Margot is so grateful to everyone involved in this production and to the department for being her home for the past four years. She wishes the cast and crew the best of luck and hopes you enjoy the show!

CAST BIOS

Mary Coulter (Berthe) is a senior double majoring in Theater and Cognitive Science. They also attended LAMDA for a semester Classical Acting program in Fall of 2024. Mary has served as the Treasurer and President of Players' Theatre Group, and also works as a Crafts Artisan/Stitcher. Recent credits: Michaela (*The Harvest*), Rose (*The Flick*), Alex (*Lunchtime*), and Sumner (*Men on Boats*). instagram: @mbcoulter



Kashmere Shafik (Catherine) is honored to be playing the role of Catherine in this production! Most recently, Kashmere was seen as Loren in *Epiphany* at her Cleveland Play House debut! Case Western's Theater Department credits include: Gwendolyn (*The Importance of Being Earnest*) and Adriana (*The Comedy of Errors*). She was also seen in Case Western's Footlighters production as Heather Duke (*Heathers*). Kashmere would like to thank her family and friends for always supporting her, especially her Mom and Grandma, for insisting on attending multiple show nights in a row.

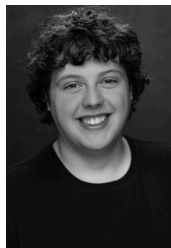
Dean Hollis (Theo) is happy to be a part of Pippin! He is a homeschooled 8th grader from Mayfield Heights and an avid reader. His favorite roles include Noah (*Caroline or Change*) at Cain Park, and Knight/Dwarf (*Shrek the Musical*) at Heights Youth Theatre. He will soon be seen as Marlin in *Finding Nemo, Jr.* with his homeschool theatre group, Harmony Arts Homeschool. He would like to thank Joanna for this amazing opportunity!



Keira Celebuski (Player) is a fourth-year nursing student who is so excited for her department debut! She is incredibly grateful to be part of such a supportive team.

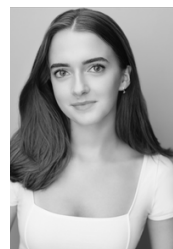
CAST BIOS

Natalie Conwell (Player) is a first-year Civil Engineering student and is so excited to be a part of her first department show!



Jack Exline (Player) a junior majoring in Theater, Psychology, and Sociology, is so excited to be performing in his fourth show on the Roe Green Stage. Previously, he has acted in *The Comedy of Errors*, *Cabaret*, and *Electra* with the Theater Department, in addition to multiple shows for the Footlighters and PTG. Outside of the department, Jack participates in various theater and academic clubs on campus. He would like to thank everyone who helped to make this production possible, and he hopes you enjoy the show!

Colette Hartman (Player) is a third-year majoring in Political Science & International Studies with minors in Theater and Spanish. She is absolutely thrilled to be in her fourth main stage production at CWRU. Previous theater credits: *Electra* (Revenge Chorus), *Cabaret* (Frenchie), and *The Mousetrap* (Miss Casewell). She has had the most fun ever working on this show and would like to extend a huge thank you to Joanna, Bradley & Kenya, Marcus & Sam, and the entire cast and crew for making it possible. She hopes you thoroughly enjoy the show!



Ian Jacobs (Player) is a fourth-year student studying Cognitive Science, Digital Media, and Theater, and is President of IMPROVment, CWRU's premier musical comedy troupe. This is Ian's 37th theatrical production, and his final one at CWRU before he graduates... cowabummer. Select CWRU acting credits: Earnest in *The Importance of Being Earnest*, Detective Trotter in *The Mousetrap*, and Jimmy in *Almost, Maine*. Film production credit: Director of *Oh, the Humanities!* (winner Audience Choice Award @SSFF). Ian is indebted to his Colorado family, his Cleveland theater family, and his partner for making these last 4 years the journey of a lifetime and for never giving up on him. www.ian-jacobs.com

CAST BIOS

Sydney Raby (Player) is so excited to to be a part of *Pippin* for her final production at CWRU. Previous credits include Dani (*Almost, Maine*), Luisa (*The Fantasticks*), and Small Alison (*Fun Home*). She is a senior studying Theater, Cognitive Science, and Communication Sciences, and will be attending graduate school next year for Speech-Language Pathology. She has too many people she would like to thank, but there isn't time for that...we've got magic to do.



Francisco "Franco" Fernandez (Player) is thrilled to be a part of this semester's production of *Pippin!* A third-year Theater major, this is his first time performing in a department production, though you may have seen him in PTG's *The Flick* last semester. Franco is incredibly grateful to be part of the ensemble and to share the stage with such a talented cast. He would like to thank the production team crew, fellow cast members, and of course, the audience for their support.

AJ Williams (Player) is a third-year Mechanical Engineering major who is thrilled to be performing in his second show with the CWRU Theater Department! Previous credits include Lane in *The Importance of Being Ernest*, Ren in *Footloose*, and Ram in *Heathers*. Offstage, you might find AJ baking, working at think[box], or designing sets against his will.



DESIGN AND PRODUCTION BIOS



Ava “Ave” Tallarida (Assistant Director) is a third-year student studying Psychology, Cognitive Science, and Theater (Directing). Their directing credits with Players Theatre Group include *Melancholy Play* and *The Flick* with Asha Kartha. Previously, Ave has sound designed for the Theater Department, but this is their first time Assistant directing, so they are very grateful for the opportunity and the wonderful team!

Alexander Gill (Assistant Music Director) is very excited to be a part of his first department production! He has been in many pit orchestras before (including Footlighters!), but this is his first time doing any music directing. Outside of *Pippin*, he also plays piano for IMPROVment and jazz and randomly participates in PTG shows.



Marcus Black (Stage Manager) is a second-year Theater Arts major with minors in Mathematics and Computer Science. Most recently, he was the PA for *Epiphany* at the Cleveland Play House. CWRU Department of Theater credits include SM of *The Harvest* and *Comedy of Errors* and ASM of *The Mousetrap*. His other SM credits include the CWRU/CPH MFA Solo Shows, *How to be a Respectable Junkie*, and Lunchtime! Back in Columbus, OH, he has done numerous shows with Short North Stage and Gallery Players, and when he’s not in rehearsals, you can find him working in Silver Hall. He thanks every stage manager that made him who he is today.

Samantha Mailer (Assistant Stage Manager) can’t think of a better way to end her third year at CWRU than with *Pippin*! She is especially grateful to Marcus and this incredible cast for all of their heartfelt work on this show. A design/technical theater major on the pre-med track, she is so thankful to be part of the CWRU theater community. As always, she sends her love to Mom, Dad, Jackson, and the rest of her family and friends.



DESIGN AND PRODUCTION BIOS



Anna Bauer (Scenic Design) is a graduating senior with majors in Pre-Architecture, Environmental Studies, and Asian Studies, with minors in Chinese, Art History, and Theater Design. This is her first undergraduate production with the department after being Assistant Scenic Designer for the MFA show *Season's Greetings*, but across 8 shows with CWRU Footlighters she's held the roles of Scenic

Artist (*Into the Woods, Anastasia, Footloose*), Head of Props (*Footloose, Heathers, Chicago*), Technical Director (*9 to 5, Legally Blonde*), and Props Crew (*Pippin*). She'd like to thank the department for giving her this opportunity, Jill for everything throughout this process, Footlighters for getting her back into theater (especially Emily Hawkins for giving her the task of making a barrel in her first semester), and everyone who helped paint or build/let her into Thinkbox/listened to her talk about ideas/etc for their time and effort.

Angelina Herin, she/her, (Costume Design) is a Cleveland, Ohio based costume, wig, and makeup designer with roots in the Pacific Northwest. She is pleased to have her work presented at many venues, including Cleveland Play House, the Seattle Opera, Creede Repertory Theatre, American Folklore Theatre, Montana Repertory Theatre, Texas Shakespeare Festival, and Theater at Monmouth. In

addition, Angelina has worked with several television/production companies as a makeup artist and stylist for national and regional programming. Since 2011, she has been the Resident Costume Designer and an Associate Professor of Theater at Case Western Reserve University. www.angelinaherin.com



Ava Bee (Assistant Costume Design) is a sophomore studying Costume design. She has previously been credited as Assistant Costume Designer for the department's production of the *Comedy of Errors*. She has also been involved in several PTG and Footlighters productions. She is grateful to both Angelina and Rainie for being the best mentors she could ask for.

DESIGN AND PRODUCTION BIOS

Jaemin Park (Lighting Design) is a lighting designer and Assistant Professor of Lighting and Sound Design at Southern Illinois University. He began his lighting design career in 2005 with the opera *La Traviata* and has since designed lighting for more than 150 productions across theatre, musicals, opera, and dance over nearly two decades.



He received the 2023 Jonathan Resnick Lighting Design Award from the United States Institute for Theatre Technology (USITT) and was selected for the 2025 USITT Training Ground with Cirque du Soleil's Resident Show Division in Las Vegas, where he received a scholarship. Recent design credits include *The Producers*, *The Bridges of Madison County*, *Footloose*, *Hello, Dolly!*, *The Prom*, *Little Shop of Horrors*, *Sweeney Todd*, *La Versión Infinita*, *El Coquí Espectacular* and *the Bottle of Doom*, and *King and the Clown*, and he has also engaged in international design and workshop activities in the United States, South Korea, Cambodia, and Nigeria.



Griffin Rabins (Assistant Lighting Design) is a third-year Computer Engineering major and is excited to be working on his first Theater Department production. His previous theater work includes technical credits on the past six CWRU Footlighters productions in lighting design, scenic construction, and technical direction, stagehand work with Rhino Staging in the Cleveland area, and an internship at

Electronic Theatre Controls in Madison, WI. He would like to thank everyone who worked on this production and is very grateful for the opportunity.

Nicholas Drashner (Sound Design) serves as Associate Professor and resident sound and projection designer in the Department of Theater at Case Western Reserve University. His design credits include productions with companies such as Cleveland Play House, Northern Stage, Dobama Theatre, Cincinnati Playhouse in the Park, Primary Stages at 59E59 Theatre, The Public Theatre, La Jolla Playhouse, Berkeley Repertory Theatre, East West Players, and Pittsburgh New Music Ensemble. He received an MFA in Sound Design and a BA in Interdisciplinary Computing in the Arts from University of California, San Diego.



DESIGN AND PRODUCTION BIOS



Alexander Olsen (Assistant Sound Design) Alex is a second year student studying Theater and Computer Science. This will be his second show with the Theater department, having previously worked on *The Harvest* in the fall. Alex also does work with CWRU Footlighters, and has done tech for their past three shows. He would like to thank everyone in the audience for coming out to see the show and hopes you enjoy it!

Eliza Ladd Schwarz (Intimacy Coordinator) is a director, performer, stage writer, song maker, and movement director from NYC who teaches Movement, Acting, and Devising Theater at CWRU/CPH MFA. In addition to contributing to numerous CWRU productions, she directed *Men on Boats* and worked on *Middletown*, *The Tempest*, *The Cherry Orchard*, *Much Ado About Nothing*, *Epiphany* and *Primary Trust* at Cleveland Play House. This Spring Eliza is offering Digging Deep: A Pop-Up Memorial Performance at the Midwest Climate Summit, developing her solo Autobiography of the Human Species (September), and initiating a new ensemble collaboration. www.elizaladd.com



DEPARTMENT OF THEATER

Department Chair.....Jeffrey Ullom
Artistic Director.....David Vegh
Managing Director.....Angelina Herin
Administrator.....DeBorah Hamilton
Production Manager & Technical Director.....Homer J. Farr
Scene Shop Manager & Asst. Technical Director.....Nathan Kunst
Costume Shop Manager.....Rainie J. Wilkes
Theater Coordinator.....Gregory Przybylak

SPECIAL MENTIONS

Photographer.....Steve Wagner
Videographer.....Zachary Niton
Graphic Design.....Patrick Miller
Social Media Manager.....Reighan Bean

BEHIND THE SCENES

The Theater Program gratefully acknowledges the generosity of Friends of Theater contributors and the following special support for the 2025–2026 Season:

Nadine Miles Endowment Fund

Designated departmental support for special projects.

Flora Stone Mather Alumnae Association

Scholarship support and guest lectureships for our undergraduate students.

Gerard and Marie Bechhold Gentile Endowment Fund

Major new acquisitions in Technical Theater and Design.

Malcolm and Louise Elsoffer Endowment Fund

Designated departmental support for theatrical productions.

FRIENDS OF THEATER 2025-2026

Dr. and Mrs. Andrew Gross

Mr. Thomas P. Leff

Mr. Ned Hitchcock, II

Cleveland Foundation

Cynthia G. Dettelbach, Ph.D.

Emmett J. Gossen, Jr., Ph.D. J.D.

James W. Simmelink, Ph.D

Joyce A. Simmelink

Lynn Radlauer & Edward (Ned) Lubell

Michael A. St. Clair, Ph.D.

Michael Lederman

Michael Stein

Mr. Akshai Singh

Mr. David Foler

Ms. Amy Memis-Foler

Mr. Donald Charles Carrier

Mr. Frederick McGuire

Mr. Gary A. Nemeth

Mr. Guillermo Olivos

Mr. Mark A. Francioli

Mr. Thomas P. Gates

Mrs. Judy Strauss-Schwartz

Mrs. M. Gail Jones-Nemeth

Mrs. Minna Silverman Buxbaum

Mrs. Robin Dunn Fixell

Mrs. Susan Sering

Ms. Amy Memis-Foler

Ms. Gretchen M. Hurst

Ms. Laurel A. Lockhart

Ms. Maeve McGuire

Ms. Maura A. Emerson

Ms. Susan Hess Lucier

P. Jeffrey Lucier

Peter T. Smith, Ph.D.

Prof. Catherine L. Albers

Prof. Jerrold Scott & Mr. Troy Watson

Rev. Dr. Susan K. Ventura

Sharmon Sollitto

The William R. Hill Charitable Fund

Theodore Herstand, Ph.D.

YOU CAN BECOME A FRIEND OF THEATER INSTANTLY!

Text @cwru to 52014, followed by #theater and the dollar amount you wish to donate or visit .

Checks, made payable to CWRU, may be sent to Friends of Theater c/o The College of Arts and Sciences, 10900 Euclid Ave. Cleveland, OH 44106-7068



**CASE WESTERN RESERVE
UNIVERSITY**
College of Arts and Sciences
Theater