

TORI SACHA CORDIANO (LEFT) AND ANNAMARIA AGUIRRE MCLAUGHLIN (RIGHT) HAVE BEEN AWARDED THE BRISKY FELLOWSHIP



Brisky Fellowship Awarded

The Schubert Center awards the Brisky Fellowship, supported by the Cora Unger Brisky Endowment, to graduate students completing dissertation research on important child issues. This year's recipients of the Brisky Fellowship are Tori Sacha Cordiano and AnnaMaria Aguirre McLaughlin, advanced graduate students in clinical psychology.

A Cleveland native, **TORI SACHA CORDIANO** received both a B.A. in psychology (2003) and an M.A. in clinical psychology (2005) from Case Western Reserve University. Her undergraduate thesis, published in *Early Childhood Education Journal*, examined the relationship, in preschool children, between creative imagery and learning to dance. Her dissertation research, *Construct Validity of the Affect in Play Scale – Brief Rating*, will determine the efficacy of an adapted version of the original Affect in Play Scale (APS) that does not require the use of videotaped observation. Cordiano will observe the pretend play of 81 first and second grade students and compare the results with assessments of personality variables such as openness to experience, agreeableness, conscientiousness, and divergent thinking (an indicator of creativity). If her study confirms the validity of the APS without videotaped observation, Cordiano hopes that the adapted scale will begin to be used more widely by clinicians and researchers. After completing her degree, Cordiano would like to conduct clinical work with families and children while continuing her research on pretend play.

ANNAMARIA AGUIRRE MCLAUGHLIN received her B.A. in psychology and Spanish from Miami University (Ohio) in 2002 before entering Case Western Reserve's graduate program in clinical psychology, where she received her M.A. in 2006. Her master's thesis, "Influence of Setting on Academic and Behavioral Performance of Children Diagnosed with ADHD," was published in the journal *Advances in ADHD*. With a grant from the National Institute on Drug Abuse, Aguirre McLaughlin is investigating whether prenatal cocaine exposure is associated with risk-taking behaviors in early adolescents. Her dissertation, examining a cohort of prenatally cocaine-exposed 12-year olds who have been studied since birth, will compare their behaviors with those of children who were not exposed to cocaine. If she discovers an association between prenatal cocaine exposure and risk-taking behaviors, Aguirre McLaughlin hopes that her findings will inform early interventions targeted to a susceptible population. Her career plans include pursuing a clinical research position and teaching at a liberal arts college.

Case Conversations On Children In Research And Policy

This continuing seminar fosters interdisciplinary discussions and relationships among Case Western Reserve faculty, students, staff, and members of the wider community interested in children and childhood. Each conversation includes a presentation of child-related research, usually by a faculty member; a response from a policy expert who examines the implications of the research; and a discussion session that allows time for questions. A light lunch is provided, and all are welcome. For details about future conversations, please see the seminar schedule on the back page of this newsletter, or visit our website at <http://www.case.edu/artsci/schubert/converse.html>

SEE SEMINAR SERIES SCHEDULE ON BACK PAGE >

2007-08 seminar series CASE CONVERSATIONS ON CHILDREN IN RESEARCH AND POLICY

All lectures run from 11:45am-1:00pm and take place in Thwing Center on the CWRU Campus.

For further information about this series, visit the Schubert Center for Child Studies website: www.case.edu/artsci/schubert/converse.html

TUESDAY, OCTOBER 9, 2007

Children's Participation in Out-of-School Activities: The Impact of Family and Neighborhood

Claudia Coulton, Ph.D., Lillian F. Harris Professor and Co-Director, Center on Urban Poverty and Community Development, Mandel School for Applied Social Sciences; Molly Irwin, MPH, Director, Child Policy Initiative, Schubert Center for Child Studies

TUESDAY, NOVEMBER 13, 2007

The Impact of Urban Hassles as Chronic Stressors on Adolescent Mental Health

David B. Miller, Ph.D., Associate Professor, Mandel School of Applied Social Sciences

TUESDAY, FEBRUARY 19, 2008

The Effect of Age at School Entry Policies on Children's Academic Success

Heather N. Royer, Ph.D., Assistant Professor, Department of Economics

TUESDAY, MARCH 18, 2008

Racial Equality in Intelligence: Evidence from a Theory of Intelligence as Processing

Joseph Fagan, Ph.D., Lucy Adams Leffingwell Professor, Department of Psychology

TUESDAY, APRIL 15, 2008

The Role of Genetics in Speech, Language, and Reading Disorders among Children

Barbara A. Lewis, Ph.D., Associate Professor, Communication Sciences

Jill E. Korbin, Ph.D. DIRECTOR | Molly Irwin, M.P.H. DIRECTOR, CHILD POLICY INITIATIVE | Eileen Anderson-Fye, Ed.D. ASSOCIATE DIRECTOR | Elizabeth Short, Ph.D. ASSOCIATE DIRECTOR | Jessica McRitchie ADMINISTRATOR | Gayle Channing Tenenbaum, M.S.W. CONSULTANT | Donald Freedheim, Ph.D. FOUNDING DIRECTOR | Michelle McTygus DESIGN



Schubert Center for Child Studies
615 Crawford Hall
10900 Euclid Avenue
Cleveland, OH 44106-7179

phone 216.368.0540
fax 216.368.1196
www.case.edu/artsci/schubert/schubertcenter@case.edu

SCHUBERT CENTER *for* CHILD STUDIES

newsletter

FALL 2007

Schubert Center Receives Continued Support from the George Gund Foundation

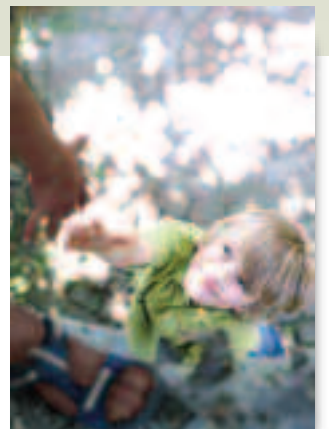
The Schubert Center is delighted to announce that the George Gund Foundation has awarded continued funding to the Child Policy Initiative (CPI) through 2009. Established in 2004 with the Foundation's support, CPI has enhanced the connections among research, education, and child policy at Case Western Reserve University, mobilizing faculty interest and participation in policy-related activities, creating opportunities for increased contact between researchers and the policy community, and adding a child policy component to undergraduate education.

Over the past three years, CPI has instituted three new child policy courses, two of which include experiential components to give students a firsthand look at the policymaking process. Students have met with policymakers and advocates in Columbus, Ohio and Washington, D.C., and many have worked as Mann Child Policy Externs with policy-focused organizations in the Cleveland area. These externships not only enhance students' understanding of child policy; they also provide a link between the Schubert Center and the local policy community.

Other highlights of CPI's first phase included the publication of *As Life Unfolds: Research on Children and Childhood at Case Western Reserve University*, a compendium that helped make policymakers, public officials, leaders in the nonprofit sector, and the broader public aware of the range of child-related research conducted by our faculty. (*As Life Unfolds* can be downloaded from the Schubert Center website.) To further encourage dialogue

between researchers, policymakers, and community members, the Schubert Center has organized a seminar series, Case Conversations on Children in Research and Policy, that invites active involvement by all three constituencies. After each conversation, CPI publishes a Child Policy Brief summarizing the research presented and its policy implications. The final highlight of CPI's first phase was an inaugural Legislative Breakfast in January 2007, which brought state and local policymakers together with our faculty to make introductions and create a foundation for collaborative relationships.

The Schubert Center is excited to build on the early accomplishments of the Child Policy Initiative. With our newly expanded leadership and staff, we will redouble our efforts to bridge the gaps between academic study, public policy formation, and professional practice. Many new activities and projects are planned for CPI's second phase, and we will soon be publicizing upcoming events.



undergraduate childhood studies program



EXPERIENTIAL LEARNING IN CHILD POLICY: Students Travel to Columbus

Experiential Learning in Child Policy, a 300-level course in Childhood Studies, gives students an in-depth understanding of the child policy process at the state and federal levels. The course includes an experiential component: students spend several days over spring break in Columbus, Ohio, or, in alternate years, in Washington D.C. This past spring, five undergraduates traveled to Columbus to talk with staff from the office of Governor Ted Strickland and with staff and members of the Ohio legislature, to attend hearings on child policy issues, and to visit policy, research, and advocacy organizations. The experience is certain to inform their further studies in child policy.

Mann Child Policy Externship

With support from the Mann Endowment Fund, the Schubert Center arranges “externships” for undergraduates seeking experience with community organizations involved in child policy. Since 2005, eleven students have served as Mann Child Policy Externs with various community organizations including the *Center for Community Solutions*, *Voices for Children*, *Invest in Children*, and the *Alliance of Child Caring Service Providers*.

GENNIFER GIBBS, who is pursuing a double major in psychology and economics and a minor in childhood studies, was a sophomore when she was awarded an externship with the Center for Community Solutions last spring. She calls the experience “a pivotal point” in her academic career:

“Prior to my externship, I planned on pursuing a PhD in clinical psychology and working with children. I took advantage of this wonderful opportunity in order to develop a sense of the political and social issues that I would encounter with future clients. As a Schubert Center extern, I worked on the *Ohio Early Care and Education Campaign*, focusing specifically on the social and cognitive impact of pre-kindergarten.

“As the semester progressed, I started to realize that many of the behavioral problems that psychologists must face could be ameliorated through educational reform. I have also learned that in a society with an increasing emphasis on problem solving, mathematical and technological competence, and scientific innovation, a strong early educational foundation is a necessity to lay the groundwork for higher education, specialization, and national growth. However, the public educational system continually fails to meet the needs of many children while overlooking the years when the brain is most malleable.

“The statistics that I encountered regularly were alarming, and as a result, I now hope to find a place in my future career where I can be part of a team working to change some of these bleak facts. Upon graduation, I plan on going to law school where I will work towards a JD/MPP and hopefully one day work in policy at the national level.

“I really hope that other students take advantage of this opportunity, as it was certainly one of the most valuable experiences that I have had at Case Western Reserve University!”



SCHUBERT CENTER'S CHILD POLICY INITIATIVE DIRECTOR, **MOLLY IRWIN**, WAS SELECTED TO PARTICIPATE IN THE CENTER FOR COMMUNITY SOLUTIONS' 2007 FEDERAL BUDGET TRAINING ACADEMY. IN SEPTEMBER, SHE AND ALMOST 30 OTHERS FROM ACROSS OHIO SPENT THREE DAYS IN WASHINGTON D.C. MEETING WITH CONGRESSIONAL STAFF AND FEDERAL LEGISLATIVE AND BUDGET EXPERTS.



Community Forums with *Help Me Grow*

This fall, the Schubert Center will partner with Cuyahoga County's *Help Me Grow* to present a series of community forums highlighting child-related research by Case Western Reserve faculty. *Help Me Grow* is a statewide child health and development program that provides services to expectant parents, newborns, infants, and toddlers. Researchers at the forums will present their findings to service providers, families, and community members and discuss the policy implications of their work.

The featured speaker at the first forum will be Maureen Hack, MD, a professor of pediatrics and one of the leading international authorities on the neurodevelopmental outcomes of preterm children. As director of the Neonatal High Risk Follow-Up Program, Dr. Hack has studied a cohort of premature infants from birth into their mid-twenties. Her clinical and epidemiological research has documented the impact of neonatal intensive care on cognitive and neurosensory outcomes. The forum will be held Friday, October 26, 10:00am - 12 noon, at the Cleveland headquarters of the Visiting Nurse Association, 2500 E. 22nd Street.

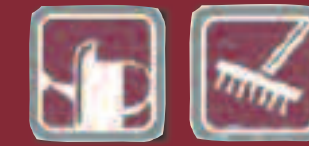
SCHUBERT CENTER PARTICIPATES IN HEALTHCARE CONFERENCE

In the midst of a national policy debate about funding health insurance for low-income children and their families, the Cuyahoga Board of County Commissioners and the County's Department of Employment & Family Services hosted a conference in June titled “Making it Work! Moving Families' Access to Healthcare into the 21st Century.” The day-long event was conducted in partnership with the Schubert Center, Ohio Covering Kids & Families, Voices for Ohio's Children, and Invest in Children.

The conference featured Donna Cohen Ross, outreach director at the Center on Budget and Policy Priorities in Washington, D.C. As she led discussions of strategies to improve health care coverage for children and families, Ross emphasized the importance of building partnerships among community leaders, public officials, and hospital systems. Also at the conference, Mary Wachtel, director of public policy for Voices for Ohio's Children, gave an update on the state budget and the pending reauthorization of the State Children's Health Insurance Program (CHIP). Congress and the Bush administration have been at odds over legislation to extend the program.

The Schubert Center looks forward to sponsoring and taking part in other events where community members, researchers, policymakers, and advocates address issues facing children and families in our community.

The Schubert Center for Child Studies in the College of Arts and Sciences at Case Western Reserve University promotes multidisciplinary research on children and childhood. Our goal is to build and enhance connections among research, policy, and educational initiatives at the University and with the community. The Schubert Center's focus is on children and childhood from infancy through adolescence in local, national, and international contexts.

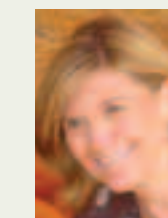


COME VISIT US IN OUR NEW SPACE Although the Schubert Center is still located in 615 Crawford Hall, our office feels new. We took the opportunity this summer to make some modest renovations, opening up more space in which to work and to welcome visitors. Please drop by the Schubert Center this fall—you'll see a sign outside our new door.

The Schubert Center is Expanding We are happy to welcome two new associate directors and a department assistant at the Schubert Center for Child Studies.



ELIZABETH SHORT, ASSOCIATE DIRECTOR Dr. Short has been on the faculty since 1984 and is currently a full professor in the department of psychology. A developmental, cognitive, and clinical psychologist, she specializes in the processes underlying cognitive development in preschool and school-aged children. Much of Dr. Short's research has focused on individual differences in learning and cognition. More specifically, she has sought to understand the role that cognitive, affective, and motivational factors play in the academic and social development of a variety of populations, including very low birthweight children, cocaine-exposed children, and children with a variety of diagnosed problems (i.e., learning disabilities, attention deficit disorder, language disabilities, reading disabilities, and autism). Dr. Short has been involved with the Schubert Center for many years, serving on the committee that oversees the interdisciplinary childhood studies minor. Now, as one of the Center's associate directors, she will take a leadership role in childhood studies programming and advising.



EILEEN ANDERSON-FYE, ASSOCIATE DIRECTOR Dr. Anderson-Fye recently joined the Case Western Reserve community as a faculty member in anthropology. She comes to us from the UCLA Center for Culture and Health, where she completed a National Academy of Education/Spencer Foundation Postdoctoral Fellowship in 2006-07. Dr. Anderson-Fye earned her doctorate in human development at Harvard University and completed postdoctoral training in psychiatry and biobehavioral sciences at UCLA, where she received the prestigious Chancellor's Award for Postdoctoral Research. She has served on a number of national interdisciplinary task forces and panels sponsored by the Society for Research on Child Development, the National Child Traumatic Stress Network, the National Science Foundation, and the Foundation for Psychocultural Research.

Dr. Anderson-Fye's research focuses on adolescent well-being in contexts of rapid cultural change brought about by globalization and immigration. As an anthropologist and a scholar of human development, she devotes particular attention to gender, ethnicity, culture, and race. Dr. Anderson-Fye has published articles and book chapters on the intersection of culture and adolescent mental health, examining body image and eating disorders as well as post-traumatic stress.



JESSICA McRITCHIE, DEPARTMENT ASSISTANT Ms. McRitchie has been a Case Western Reserve employee for seven years and comes to the Schubert Center from the admissions office at the law school. She is currently working on her B.A. in political science and plans to complete her degree in May 2008. Among her many responsibilities, she will coordinate events and communicate with faculty, staff, and community members working with the Schubert Center.